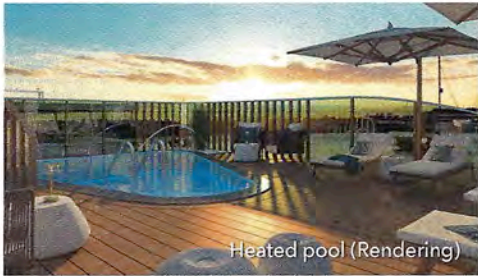


NEW: AMADEUS NOVA



Stateroom, Mozart & Strauss Deck (Rendering)



Heated pool (Rendering)



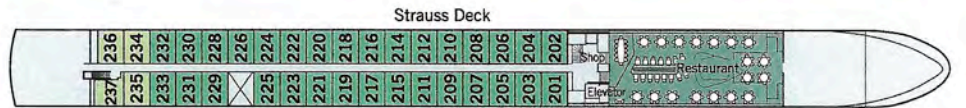
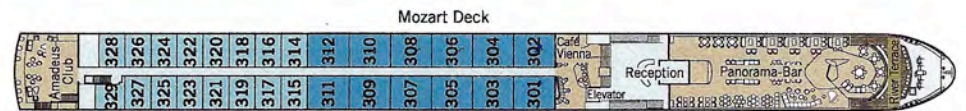
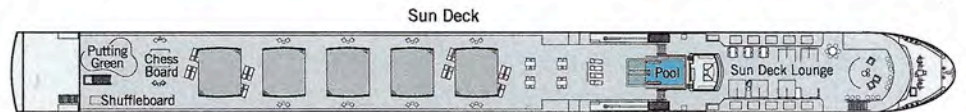
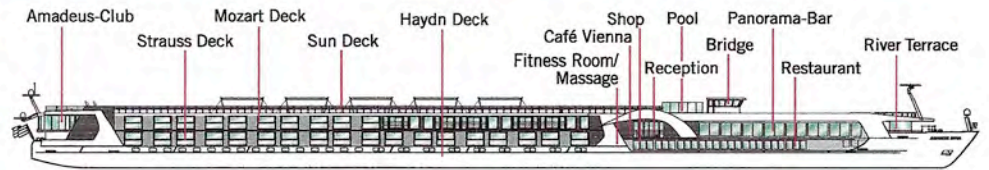
Rendering

ONBOARD FACILITIES

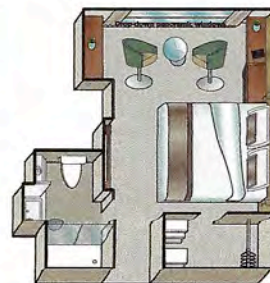
- Panorama-Restaurant
- Panorama-Bar and Lounge
- Amadeus-Club
- "Café Vienna" with Viennese coffee specialities
- Outdoor glass-shielded "River Terrace"
- Heated pool
- Sun Deck with Sun Deck Lounge, lounge chairs, shade awnings, Golf Putting Green, giant Chess Board and Shuffleboard
- Fitness Room, Massage Room
- Gift Shop, Laundry Service
- Complimentary bicycles on board
- Wi-Fi available
- Elevator

STATEROOM AMENITIES

- Suites (26,4 m²/284 sq.ft.) with comfortable corner sofa, luxurious bathroom and walk-out exterior balcony
- Staterooms (17,5 m²/188 sq.ft.) on Strauss and Mozart Deck with drop-down panoramic windows
- Staterooms (16 m²/172 sq.ft.) on Haydn Deck with smaller panoramic windows (cannot be opened)
- Mini-Bar (all staterooms except categories C-1 and C-4)
- Walk-in wardrobe
- Choice of bed configuration: double or twin bed
- Flat-screen television
- Individual climate control
- Bathrooms with walk-in shower
- Bathrobes in Suites
- Hair dryer
- Direct dial telephone
- In-room safe



Suite



Stateroom, Mozart and Strauss Deck

TECHNICAL DATA

- Built: 2024
- Register: Germany
- Length: 135 m | 443 feet
- Width: 11,4 m | 37,5 feet
- Height above water: 6 m | 19,8 feet
- Speed: 25 km/h | 15,5 mph
- Decks: 4
- Staterooms/Suites: 67/12
- Max. passengers: 158
- Crew members: approx. 46